

**CERTIFIED LAND CORNER RECORDATION**

DESCRIPTION OF CORNER EVIDENCE FOUND, AND ORIGINAL RECORD (if known)

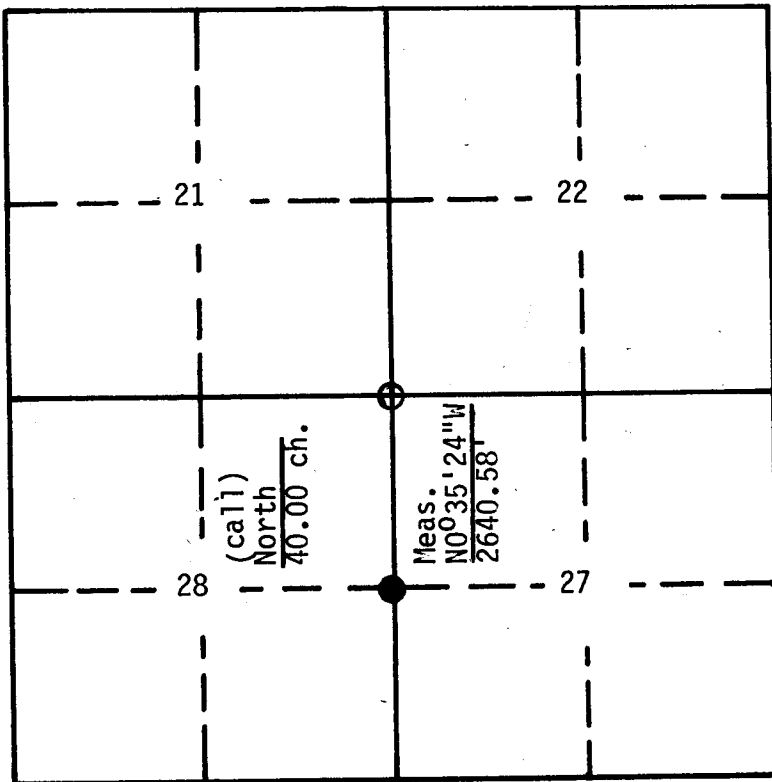
Record: Set a limestone 18x12x3 for ¼ section corner.

DESCRIPTION OF MONUMENT AND ACCESSORIES ESTABLISHED  
TO PERPETUATE THE ORIGINAL LOCATION OF THIS CORNER:

Found: loosely set limestone 17"x12"x4", 2" in the ground and leaning badly. Stone marked with a faint ¼ notched on West face. Reset stone in found position 7" above ground.

Set: a red metal post 5.0' West.

SKETCH, WITH COURSE AND DISTANCE TO ADJACENT CORNER IF DETERMINED IN THIS SURVEY.  
(May Sketch or Paste Reproduction on Reverse Side.)



Section 27 T: 17N R: 66W

- corner filed--this form
- controlling corner

DETAILS

Basis of bearings were established from the record bearing between the Northwest and North ¼ section corner of Section 27, T17N R66W.

Surveyed: October 24, 1983

Job # 83104.000

I, Randall J. Rowley certify that I have carefully performed or reviewed the work done on the diagrammed corner as reported on this recordation form and approve the same.

Randall J. Rowley 3888  
Signature of Surveyor Registration No.

Green River Wyo  
STATE OF WYOMING,  
Office of Clerk and Recorder,  
County of Laramie

725448

This "corner record" was filed for record on the DEC 9 1983 day of \_\_\_\_\_, 19\_\_\_\_, was noted on the cross-index plat and is assigned page No. \_\_\_\_\_, in book No. \_\_\_\_\_.

James C. Whitehead  
County Official

Cross Index No. _____	T. _____	R. _____	Mer. _____
_____	T. _____	R. _____	Mer. _____
_____	T. _____	R. _____	Mer. _____
_____	T. _____	R. _____	Mer. _____
_____	T. _____	R. _____	Mer. _____
_____	T. _____	R. _____	Mer. _____
_____	T. _____	R. _____	Mer. _____

T-13